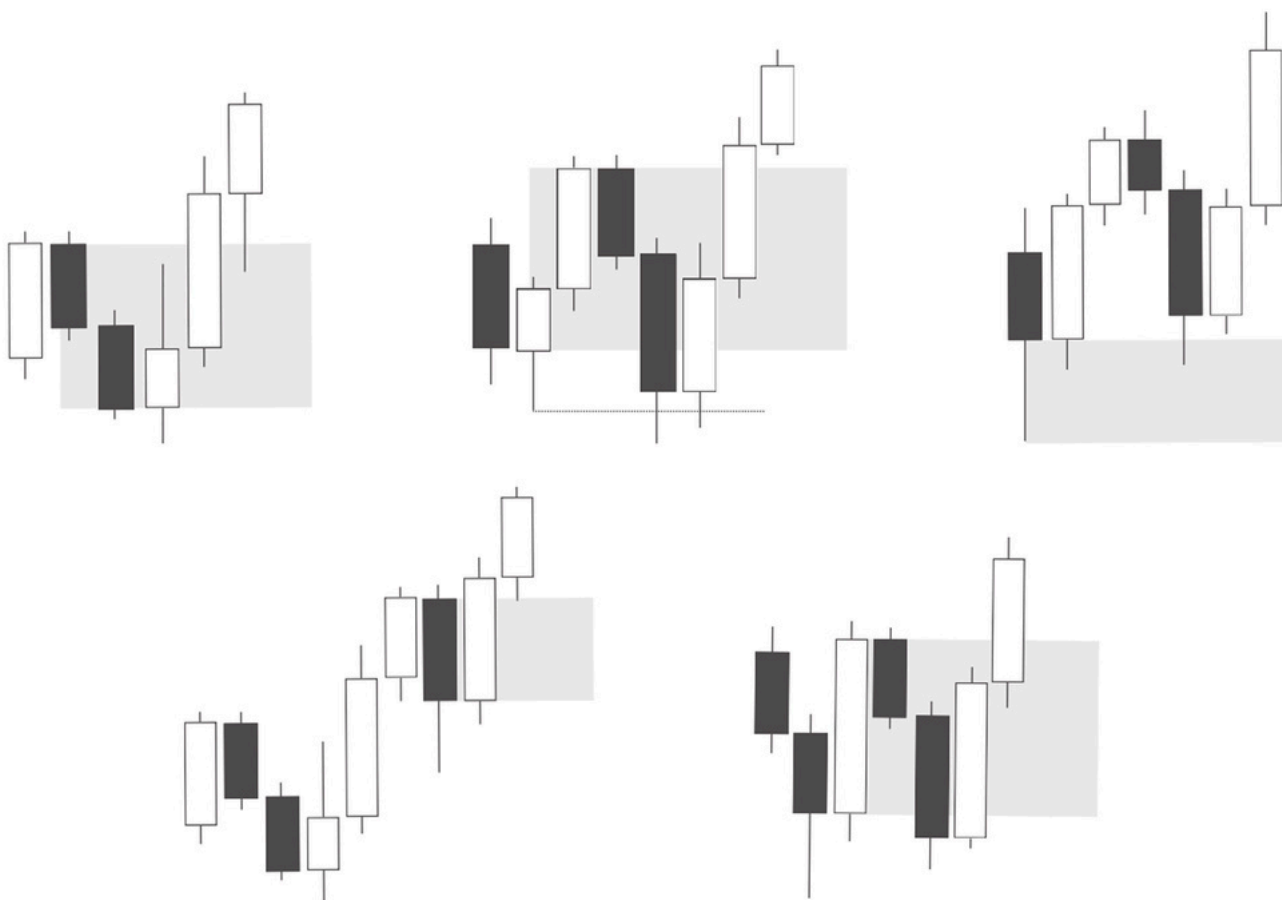




MENTORSHIP

Detailed, bottom-up breakdown of the mentorship curriculum

Start from the foundations, build structured understanding, and progress step-by-step into execution.





CURRICULUM

I. Order Flow & Market Participants (Foundation)

- What is ICT / SMC
- Order Flow basics
- Banks, Institutions, Market Makers, Retail
- IPDA (Inter-Bank Price Delivery Algorithm)
- Why price is delivered (not random)

II. Market Reality & Smart Money Concepts

- Smart Money Concepts (SMC)
- Liquidity (core idea)
- Buy-Side Liquidity (BSL)
- Sell-Side Liquidity (SSL)
- Chart Pattern Liquidity
- Trend line Liquidity
- Support & Resistance Liquidity
- Time-Based Liquidity
- Liquidity Runs (High/Low sweeps)

III. Market Structure & Price Behaviour

- Market Structure
- Break of Structure (BOS)
- Market Structure Shift (MSS)
- Change in State of Delivery
- Swing Highs / Lows
- Trend vs Range
- Timeframe Alignment
- Daily Bias (intro)

IV. Liquidity Intent & Manipulation

- Liquidity Sweeps & Grabs
- Trap formations
- Inducement
- Sequential SMT
- SMT Divergence
- SMT with Quarterly Theory

V. Institutional Pricing & Valuation

- Institutional Premium & Discount
- Key Institutional Price Levels
- Quarter Points
- True Day Open
- PO3 (Power of Three – Open, High, Low, Close)
- PO3 + True Day Open
- Daily & Weekly Profiles
- Daily Bias using OHLC & PO3

VI. Reaction Zones (Where Trades Come From)

- Order Blocks (OB)
- Breaker Blocks
- Supply & Demand Zones
- Imbalance
- Fair Value Gaps (FVG & IFVG)
- Mitigation
- Rebalancing

VII. Wyckoff & Accumulation/Distribution

- Wyckoff Theory
- Accumulation
- Manipulation
- Distribution
- Change of Delivery Phases

VIII. Market Timing & Sessions

- ICT Time & Price Theory
- ICT Time Zones
- Asian Session
- London Session
- New York Session
- London Silver Bullet
- New York Silver Bullet
- Best trading windows

IX. Multi-Timeframe Framework

- Higher Timeframe Narrative
- Lower Timeframe Refinement
- Timeframe Alignment
- Building directional bias

X. Trade Execution Models

- Entry Model
- Entry confirmations
- Entry triggers
- Targeting liquidity
- Scaling in/out
- Exit techniques

- Silver Bullet
- BOS Retest Model
- CRT
- CRT Examples
- MMXM Model



CURRICULUM

XI. Advanced Correlations & External Tools

- CME concepts
- Inter-market relationships
- Correlation confirmation

XII. Risk Management

- Stop Loss logic
- Position sizing
- Trade scaling
- Trailing stops
- RR & expectancy math

XIII. Advanced Tools & Indicators

- Fibonacci
- Premium/Discount tool
- Marking highs/lows
- Zone drawing
- Volume tools

XIV. Error Correction & Review

- Common mistakes
- Overtrading
- Misreading liquidity
- Journaling
- Backtesting
- Weekly review

XV. Trading Psychology & Discipline (Final Layer)

- Emotional control
- Patience
- Fear & greed
- Confidence building
- Independent decision making